

PART OF THE NE. 1/4, OF SECTION 20, T.6N., R.3W., S.L.B. & M.  
**SILVERLINE INDUSTRIAL PARK SUBDIVISION**

194

IN WEBER COUNTY  
 SCALE 1" = 200'

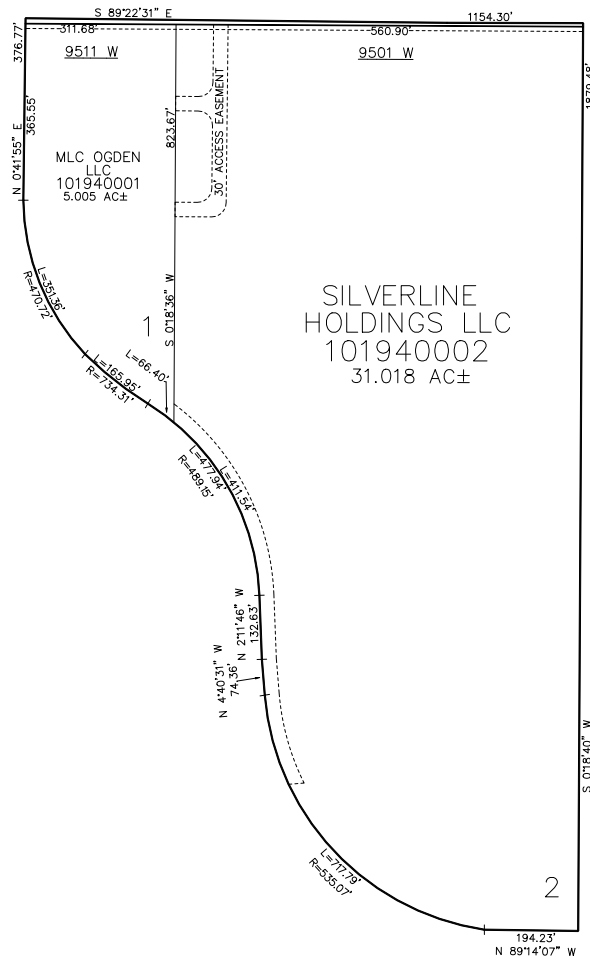
TAXING UNIT: 302

SEE PAGE 41

900 SOUTH

SEE PAGE 41

SEE PAGE 41



10' UTILITY & DRAINAGE EASEMENTS EACH  
 SIDE OF PROPERTY LINES AS INDICATED  
 BY DASHED LINES EXCEPT AS OTHERWISE  
 SHOWN.

FOR COMPLETE SURVEY DATA SEE  
 ORIGINAL DEDICATION PLAT IN  
 BOOK 96, PAGE 60 OF RECORDS.